

**KEY**

**EXISTING**

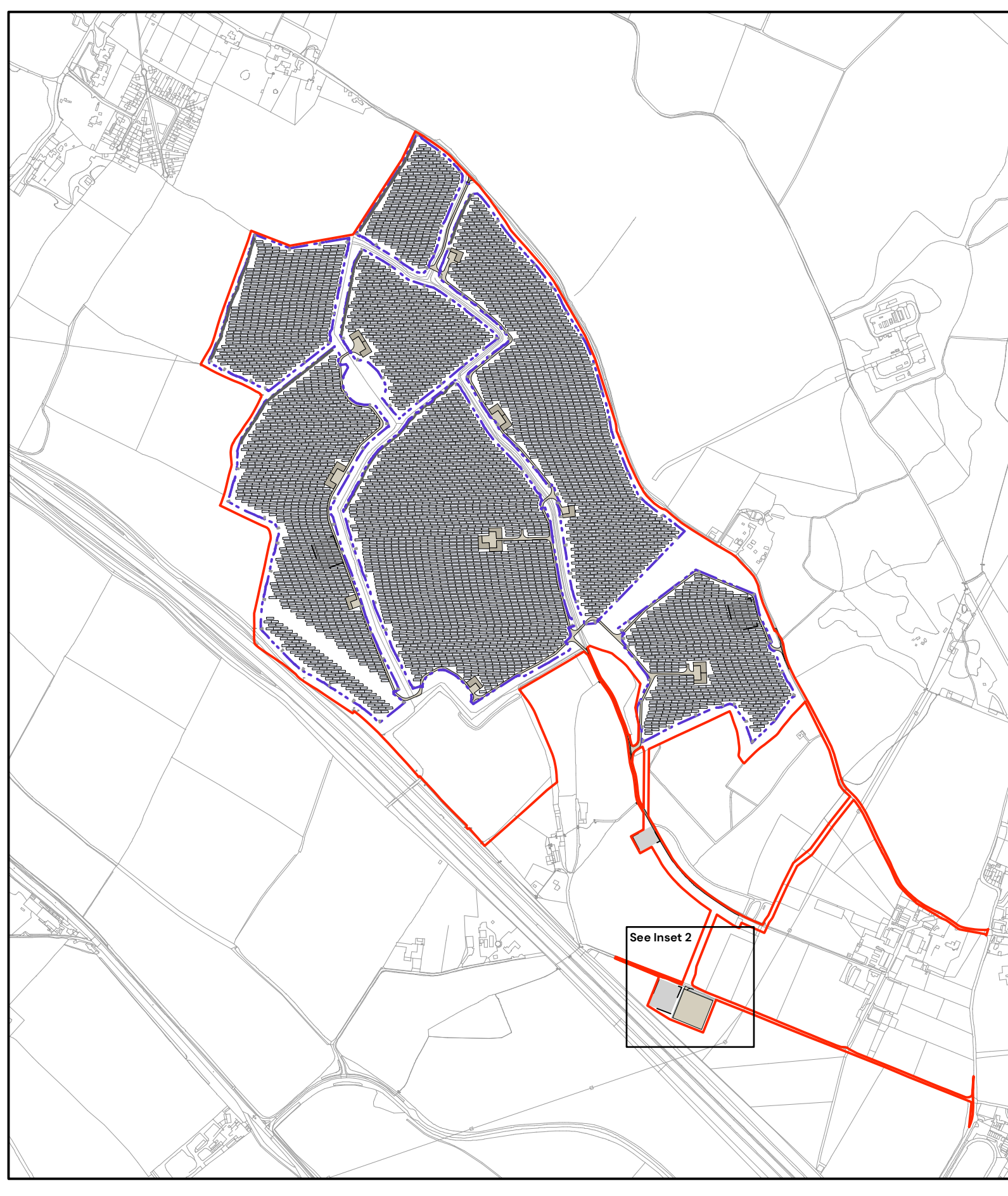
- Red line boundary
- Ancient woodland buffer zone
- Trees and vegetation
- Root Protection Areas
- Indicative areas of vegetation removal
- Existing and retained recreational horse-riding tracks
- Public Rights of Way
- Overhead line and offsets
- Access track

**PROPOSED SOFT LANDSCAPING**

- Native woodland buffer mix
- Native hedgerow tree planting
- Native mixed hedgerow planting
- Strategic infill planting where required: native mixed hedgerow
- Emorsgate Meadow Mixture for Loamy Soils EM5; or similar approved suitable for site's ground conditions to be agreed (outside the security fence)
- Grazing mixture: species-rich grassland suitable for site's ground conditions to be agreed (within the security fence)
- Indicative skylark areas Specified & managed in line with BSG Ecology's recommendations - refer to 'Chimneys Appeal Support - additional ecological information' dated 17.12.2024 for specifics regarding Field 9)
- Swales

**PROPOSED HARD LANDSCAPING**

- Solar panels
- Access track / hard standing - slightly compacted locally sourced crushed aggregate
- Inverter & BESS area
- Temporary construction compound
- Areas of existing and proposed track within Ancient Woodland buffer zone to be constructed using no-dig method (reinforced with cellular confinement system, i.e. Cellweb or similar approved)
- Timber post railing
- Security fence and gate
- CCTV
- Operational access
- Emergency access
- Substation compound drainage infiltration trench
- Kissing gate



**Indicative Planting List**

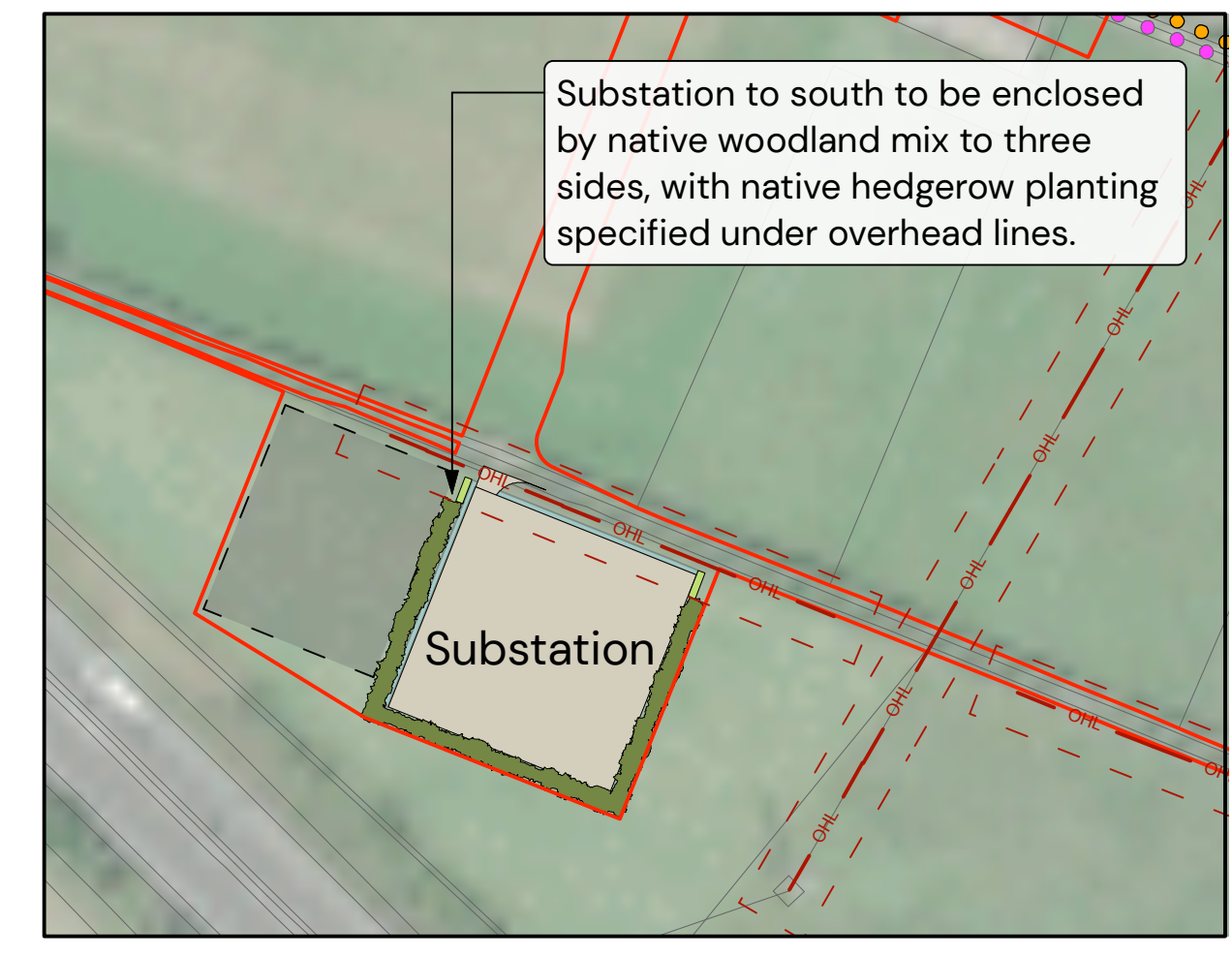
Native Tree Planting			
ID	Plant Species	Size	%
Ac	Alnus glutinosa	10-12cm, 300-350cm ht, B, 2x, Feathered, 7 breaks	10
Bp	Betula pendula	10-12cm, 300-350cm ht, B, 2x, Feathered, 7 breaks	10
Fs	Fagus sylvatica	10-12cm, 300-350cm ht, B, 2x, Feathered, 7 breaks	10
Pa	Prunus avium	10-12cm, 300-350cm ht, B, 2x, selected standard, c.s. 175-200cm, 4 breaks	5
Qr	Quercus robur	10-12cm, 300-350cm ht, B, 2x, Feathered, 7 breaks	50
Sau	Sorbus aucuparia	10-12cm, 300-350cm ht, B, 2x, selected standard, c.s. 175-200cm, 4 breaks	15

Native Mixed Hedgerows			
ID	Plant Species	Height/Pot Size	%
Ac	Acer campestre	40-60cm ht, B, 1+0, seedling	10
Ca	Corylus avellana	40-60cm ht, B, 1+1, transplant, seed-raised, branched, 2 breaks	25
Cm	Crataegus monogyna	40-60cm ht, B, 1+1, transplant, seed-raised	35
Ia	Ilex aquifolium	40-60cm ht, 2L, leader with laterals	5
Ps	Prunus spinosa	40-60cm ht, B, 1+1, transplant, seed-raised, branched, 2 breaks	10
Rc	Rosa canina	40-60cm ht, 2L, branched, 3 breaks	5
Sc	Salix caprea	40-60cm ht, 2L, cutting, branched, 3 breaks	5
Vo	Viburnum opulus	40-60cm ht, B, 1+1, transplant, seed-raised, branched, 2 breaks	5

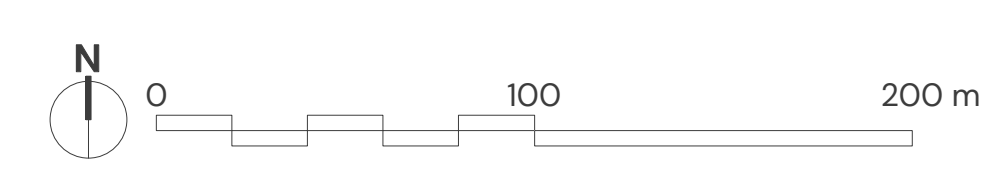
Native Woodland Mix			
ID	Plant Species	Height	%
Ac	Acer campestre	60-80cm ht, B, 1+1, transplant, seed-raised	5
Bp	Betula pendula	125-150cm ht, B, 2x, feathered, 3 breaks	10
Ca	Corylus avellana	60-80cm ht, B, 1+2, transplant, seed-raised, branched, 3 breaks	15
Cm	Crataegus monogyna	125-150cm ht, B, 1+2, transplant, seed-raised	15
Fs	Fagus sylvatica	150-175 cm ht, B, 2x, feathered 3 breaks	10
Ia	Ilex aquifolium	60-80cm ht, 5L, leader with laterals	5
Pa	Prunus avium	125-150cm ht, B, 2x, feathered 3 breaks	5
Qr	Quercus robur	150-175 cm ht, B, 2x, feathered 3 breaks	20
Sc	Salix caprea	60-80cm ht, B, 0/1 cutting, branched, 2 breaks	5
Sa	Sorbus aucuparia	125-150cm ht, B, 2x, feathered 3 breaks	10



Revisions:  
 First Issue - 11/12/2024 VK  
 A - (14/01/2025 IBD) Field 9 made entirely skylark mitigation

**Amended Scheme  
 Landscape Masterplan  
 Speedgate Solar Farm**

Client: RES  
 REV: A  
 DRWG No: P22-1221\_EN\_20  
 Drawn by: IBD  
 Approved by: IBD  
 Date: 14/01/2024  
 Scale: 1:2000 @ AO  
**PEGASUS GROUP**



Scale: 1:10,000